

PKU EASY Liquid

A quick and simple solution to help you meet your daily requirements.
Available in different flavours.



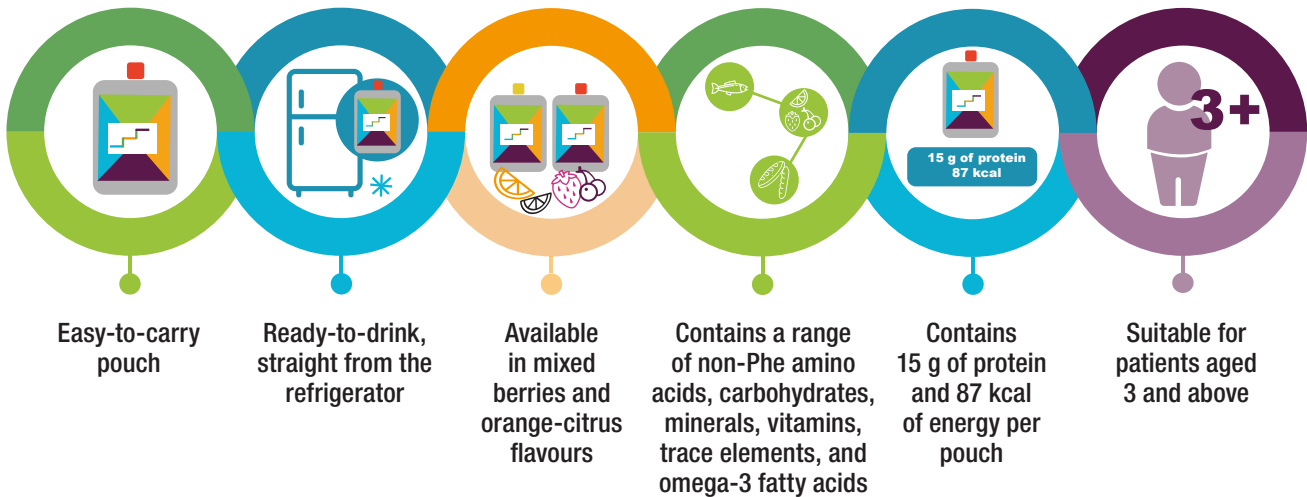
What is PKU EASY Liquid?¹

PKU EASY Liquid is a protein substitute drink. It does not contain the amino acid phenylalanine (Phe). PKU EASY Liquid can be used to support your low-Phe diet.

Each pouch of PKU EASY Liquid contains:

- a range of amino acids, carbohydrates, minerals, vitamins, trace elements, and omega-3 fatty acids
- 15 g of protein
- 87 kcal of energy

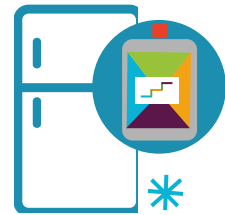
PKU EASY Liquid is available in both mixed berries and orange-citrus flavours



How do you take PKU EASY Liquid?¹

PKU EASY Liquid is available ready-to-drink, straight from the refrigerator. It is recommended that you drink PKU EASY Liquid cold, and to shake it well before drinking.

The easy-to-carry pouch is designed to give you a quick and simple solution for your PKU dietary requirements.



How do I store PKU EASY Liquid?¹

PKU EASY Liquid is available in a pack of 30 pouches. Each pouch contains 130 ml of liquid. Once you open a pouch of PKU EASY Liquid, it should be refrigerated and used within 24 hours.

It is recommended to store PKU EASY Liquid in a cool, dry place. It can be refrigerated as required.

We hope you enjoy PKU EASY Liquid

To find out more visit: www.galenmedicalnutrition.com or contact Galen on **028 3833 4974**
or e-mail customer.services@galen-pharma.com

References

1. PKU EASY Liquid Data Sheet. Galen Ltd.